

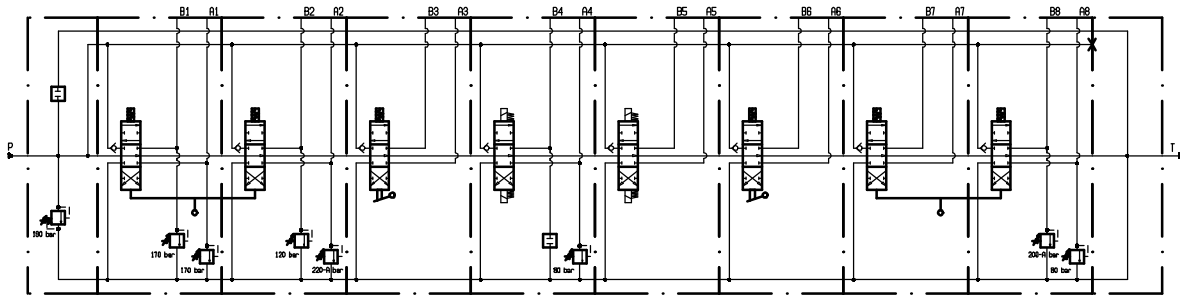
ELECTRIC PUSH-PUSH CONTROL-12V (D4)

|                           |              |
|---------------------------|--------------|
| Rated voltage             | 12 VDC       |
| Rated current             | 3.75 A       |
| Rated power               | 45 W         |
| Permitted working voltage | ±10% Nominal |
| Max ambient temperature   | +40°C        |
| Max oil temperature       | +80°C        |
| Operation time            | SI (100%)    |
| Protection degree         | IP65         |
| Insulation degree         | H            |
| Standard connector        | DIN 43650    |
| Spool stroke              | 2.8 + 2.8 mm |

STANDARD WORKING CONDITION

|                              |   |
|------------------------------|---|
| Nominal Flow                 | 80 l/min                                |
| Max. Input Pressure          | 350 bar                                 |
| Max. back pr. on Tank line   | 20 bar                                  |
| Operating temperature range  | -20/+80°C                               |
| Kinematic Viscosity Range    | 10-300 cst                              |
| Max. Contamination level     | 9 (NAS 1638) - 20/18/15 (ISO 4406:1999) |
| Recommended Filtration level | b10 >75 (ISO 16889 : 2008)              |
| PORT DIMENSIONS:             |   |
| Pilot Ports                  | XXXX                                    |
| Tank Port T                  | 3/4" BSP                                |
| Inlet Port P                 | 1/2" BSP                                |
| Working Ports A & B          | 1/2" BSP                                |

PAINTING COLOR: BLACK RAL9005



Description: DISTRIB. HC-D4 / 8



|           |    |        |            |              |         |      |   |
|-----------|----|--------|------------|--------------|---------|------|---|
| Group:    | D4 | Scale: | 1:2.5      |              |         |      |   |
| Approv.:  |    | Date:  |            | Scheme Code: |         |      |   |
| Designer: | HK | Date:  | 09/01/2018 | CODE:        | 1005774 | mod. | 5 |

Documento riservato a termini di legge con divieto di riproduzione o di rendere comunque noto a terzi senza esplicita autorizzazione.