

# SERIE ISO TANDEM 3.1.2.6.

CODICE DI ORDINAZIONE / DECODING

3.1.2.6 . XXX . X . 0 . X . 0

**DIN**  
5 4 6 2  
**SE**

ISO 62  
ISO 73  
ISO 84  
ISO 100  
ISO 116  
ISO 132  
ISO 148

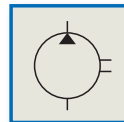
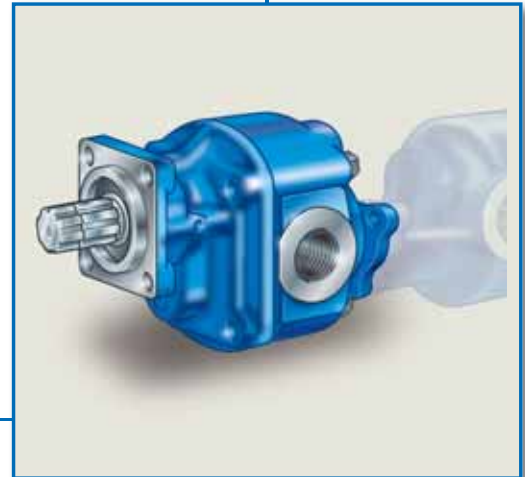
ALLESTIMENTI SPECIALI/SPECIAL OPTIONS  
1 = MONTAGGIO IN TANDEM/TANDEM FITTING  
8 = MONTAGGIO IN TANDEM E ALBERO SUPPORTATO  
TANDEM FITTING AND BEARING GEAR

ROTAZIONE/ROTATION  
1 = SINISTRO/ANTICLOCKWISE  
2 = DESTRO/CLOCKWISE

CILINDRATA/DISPLACEMENT

CODICE BASE/BASIC CODE

## Pompa ad Ingranaggi Gear Pump

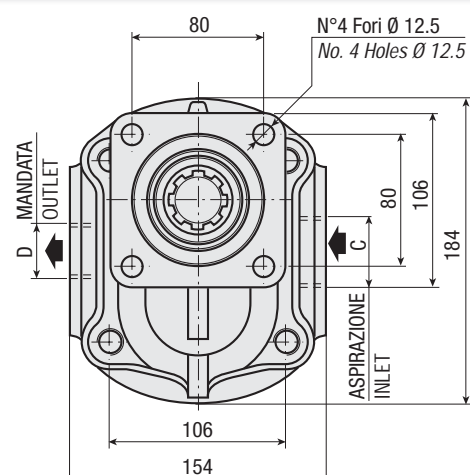
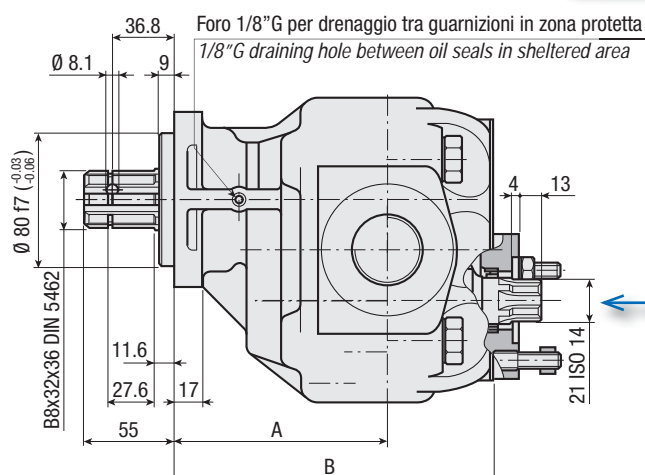


### CARATTERISTICHE E DATI TECNICI / SPECIFICATIONS AND TECHNICAL DATA

| TIPO<br>TYPE | CODICE<br>CODE      | CILINDRATA<br>DISPLACEMENT<br>cm <sup>3</sup> /rev. | A<br>mm | B<br>mm | C<br>ASPIRAZIONE<br>INLET | D<br>MANDATA<br>OUTLET | PESO<br>WEIGHT<br>kg |
|--------------|---------------------|---|---------|---------|---------------------------|------------------------|----------------------|
| ISO 62       | 3.1.2.6.062.X.0.X.0 | 62  | 122     | 186     | 1" G                      | 3/4" G                 | 20.6                 |
| ISO 73       | 3.1.2.6.073.X.0.X.0 | 73  | 126     | 190     | 1" G                      | 3/4" G                 | 21.3                 |
| ISO 84       | 3.1.2.6.084.X.0.X.0 | 84  | 130     | 194     | 1" 1/4 G                  | 1" G                   | 22.0                 |
| ISO 100      | 3.1.2.6.100.X.0.X.0 | 100   | 130     | 200     | 1" 1/4 G                  | 1" G                   | 23.0                 |
| ISO 116      | 3.1.2.6.116.X.0.X.0 | 116   | 133     | 206     | 1" 1/4 G                  | 1" G                   | 24.0                 |
| ISO 132      | 3.1.2.6.132.X.0.X.0 | 132   | 137.5   | 212     | 1" 1/2 G                  | 1" G                   | 25.1                 |
| ISO 148      | 3.1.2.6.148.X.0.X.0 | 148   | 143.5   | 218     | 1" 1/2 G                  | 1" G                   | 26.2                 |

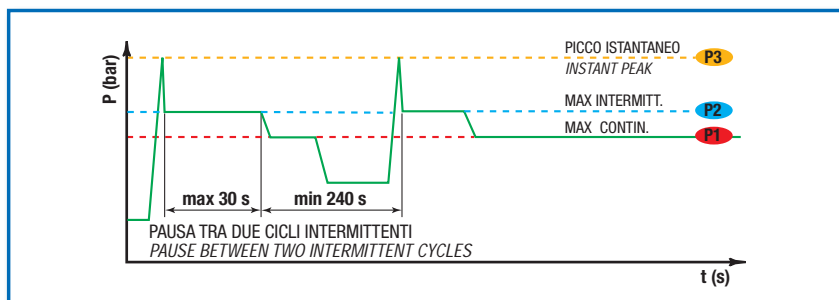
MANICOTTO PER ACCOPPIAMENTO UNI 21-222  
COUPLING SLEEVE UNI 21-222

1.17.01.001.000



**DATI TECNICI / TECHNICAL DATA**

**ESEMPIO CICLI LAVORO / EXAMPLE OF WORKING CYCLES**



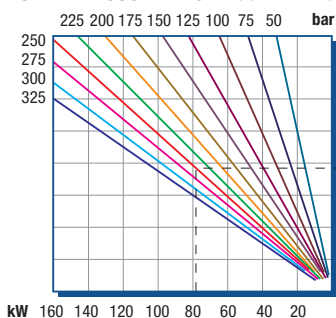
|   |                                      |
|---|--------------------------------------|
| Pressione d'aspirazione:<br>Inlet pressure:             | 0.7 ÷ 1.5 bar<br>(assoluti/absolute) |
| Campo viscosità lavoro:<br>Operating viscosity range:   | 12 ÷ 100 cSt                         |
| Temperatura fluido °C (t):<br>Fluid temperature °C (t): | -10° + 80° C                         |

| Pressione Lavoro<br>Working Press. P2 | Contaminazione / Contamination |          | Filtro / Filter<br>βx = 75 |
|---------------------------------------|--------------------------------|----------|----------------------------|
|                                       | NAS 1638                       | ISO 4406 |                            |
| ≤ 200 bar                             | 12                             | 21/18    | 40 μm                      |
| ≥ 200 bar                             | 11                             | 20/17    | 25 μm                      |

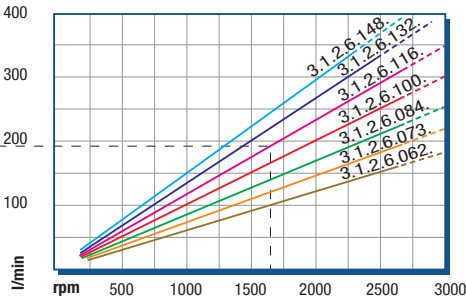
◀ **FILTRAZIONE CONSIGLIATA (ritorno o mandata)**  
**RECOMMENDED FILTERING (return or outlet)**

| TIPO / TYPE  |    |   | ISO 62 | ISO 73 | ISO 84 | ISO 100 | ISO 116 | ISO 132 | ISO 148 |
|--|----|---|--------|--------|--------|---------|---------|---------|---------|
| Cilindrata<br>Displacement   | Vg | cm <sup>3</sup> /n<br>cm <sup>3</sup> /rev. | 62     | 73     | 84     | 100     | 116     | 132     | 148     |
| Pressione massima continua<br>Max continuous operating pressure                    | P1 | bar   | 300    | 290    | 270    | 260     | 250     | 230     | 190     |
| Pressione massima intermittente<br>Max intermitt. operating pressure (max 30 s)    | P2 |   | 330    | 320    | 310    | 290     | 280     | 270     | 230     |
| Pressione massima di picco<br>Max peak pressure (≤ 0.1 s)                          | P3 |   | 450    | 450    | 375    | 375     | 340     | 315     | 270     |
| Velocità massima intermittente<br>Max intermittent speed (P ≤ 20 bar)              | n3 | n/min<br>r.p.m.                             | 3800   | 3800   | 3500   | 3500    | 3000    | 3000    | 3000    |
| Velocità massima continua<br>Max continuous speed (≤ P1)                           | n1 |   | 2000   | 1800   | 1800   | 1500    | 1500    | 1500    | 1500    |
| Velocità minima intermittente<br>Min intermittent speed (≤ P2 x 0.5)<br>(max 30 s) | n4 |   | 400    | 300    | 300    | 250     | 250     | 250     | 250     |

**POTENZA ASSORBITA / ABSORBED POWER**



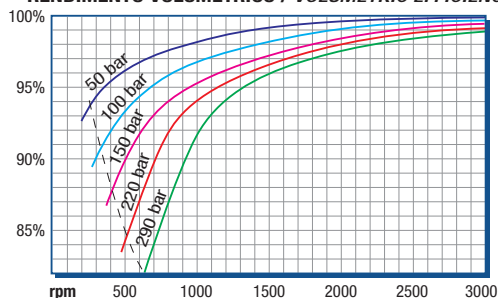
**PORTATA / CAPACITY**



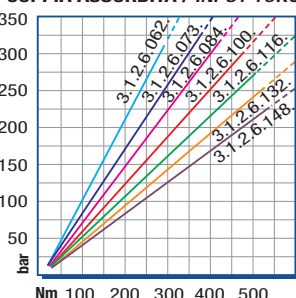
RILIEVI ESEGUITI CON OLIO  
ISO VG 46 A 50° C (ν=30 cSt)  
THE ABOVE SPECIFICATIONS  
REFER TO OIL TYPE ISO  
VG 46 AT 50° C (ν=30 cSt)

**DIAGRAMMI / DIAGRAMS**

**RENDIMENTO VOLUMETRICO / VOLUMETRIC EFFICIENCY**



**COPPIA ASSORBITA / INPUT TORQUE**



SERIE ISO TANDEM 3.1.2.6.

POMPE AD INGRANAGGI GEAR PUMPS