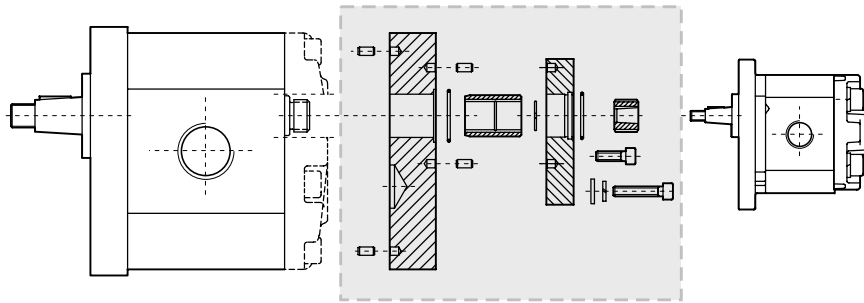
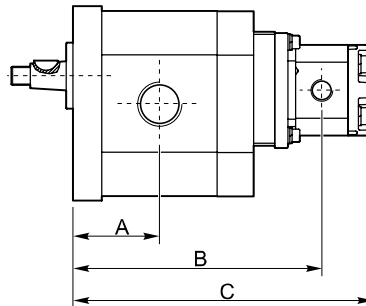


GR 3 + GR 1



Codice ordinazione kit / kit order code **01093110000000**



Codice ordinazione kit / kit order code **01093110000000**

Codice ordinazione kit / kit order code **01093110000000**

		mm (inch)		
		A	B	C
3SP...62 + 1SPA	9.8	80.4 <i>(3.163)</i>	234.9 <i>(9.250)</i>	291.1 <i>(11.461)</i>
	7.8	80.4 <i>(3.163)</i>	231.0 <i>(9.094)</i>	283.2 <i>(11.150)</i>
	6.3	80.4 <i>(3.163)</i>	228.2 <i>(8.982)</i>	277.5 <i>(10.925)</i>
	5	80.4 <i>(3.163)</i>	225.6 <i>(8.882)</i>	272.4 <i>(10.724)</i>
	4.2	80.4 <i>(3.163)</i>	224.1 <i>(8.821)</i>	269.3 <i>(10.602)</i>
	3.7	80.4 <i>(3.163)</i>	223.1 <i>(8.783)</i>	267.4 <i>(10.528)</i>
	3.2	80.4 <i>(3.163)</i>	222.1 <i>(8.744)</i>	265.4 <i>(10.449)</i>
	2.5	80.4 <i>(3.163)</i>	220.8 <i>(8.691)</i>	262.7 <i>(10.343)</i>
	2	80.4 <i>(3.163)</i>	219.8 <i>(8.652)</i>	260.7 <i>(10.264)</i>
	1.6	80.4 <i>(3.163)</i>	219.0 <i>(8.622)</i>	259.2 <i>(10.205)</i>
	1.2	80.4 <i>(3.163)</i>	218.2 <i>(8.589)</i>	257.5 <i>(10.138)</i>
	0.9	80.4 <i>(3.163)</i>	217.6 <i>(8.567)</i>	256.4 <i>(10.094)</i>

		mm (inch)		
		A	B	C
3SP...52 + 1SPA	9.8	76.4 <i>(3.006)</i>	226.9 <i>(8.935)</i>	283.1 <i>(11.146)</i>
	7.8	76.4 <i>(3.006)</i>	223.0 <i>(8.780)</i>	275.2 <i>(10.835)</i>
	6.3	76.4 <i>(3.006)</i>	220.2 <i>(8.667)</i>	269.5 <i>(10.610)</i>
	5	76.4 <i>(3.006)</i>	217.6 <i>(8.567)</i>	264.4 <i>(10.409)</i>
	4.2	76.4 <i>(3.006)</i>	216.1 <i>(8.506)</i>	261.3 <i>(10.287)</i>
	3.7	76.4 <i>(3.006)</i>	215.1 <i>(8.469)</i>	259.4 <i>(10.213)</i>
	3.2	76.4 <i>(3.006)</i>	214.1 <i>(8.429)</i>	257.4 <i>(10.134)</i>
	2.5	76.4 <i>(3.006)</i>	212.8 <i>(8.376)</i>	254.7 <i>(10.028)</i>
	2	76.4 <i>(3.006)</i>	211.8 <i>(8.337)</i>	252.7 <i>(9.949)</i>
	1.6	76.4 <i>(3.006)</i>	211.0 <i>(8.307)</i>	251.2 <i>(9.890)</i>
	1.2	76.4 <i>(3.006)</i>	210.2 <i>(8.274)</i>	249.5 <i>(9.823)</i>
	0.9	76.4 <i>(3.006)</i>	209.6 <i>(8.252)</i>	248.4 <i>(9.780)</i>

Con la flangia SAE B incrementare le quote A, B e C di 3 mm

With SAE B flange increase A, B, and C dimensions of 0.118 inch

Codice ordinazione kit / kit order code **01093110000000**

Codice ordinazione kit / kit order code **01093110000000**

		mm (inch)			
		A	B	C	
3SP...44	+ 1SPA	9.8	72.9 (2.868)	219.9 (8.659)	276.1 (10.870)
		7.8	72.9 (2.868)	216.0 (8.504)	268.2 (10.559)
		6.3	72.9 (2.868)	213.2 (8.392)	262.5 (10.335)
		5	72.9 (2.868)	210.6 (8.291)	257.4 (10.134)
		4.2	72.9 (2.868)	209.1 (8.230)	254.3 (10.012)
		3.7	72.9 (2.868)	208.1 (8.193)	252.4 (9.937)
		3.2	72.9 (2.868)	207.1 (8.154)	250.4 (9.858)
		2.5	72.9 (2.868)	205.8 (8.100)	247.7 (9.752)
		2	72.9 (2.868)	204.8 (8.061)	245.7 (9.673)
		1.6	72.9 (2.868)	204.0 (8.032)	244.2 (9.614)
		1.2	72.9 (2.868)	203.2 (7.998)	242.5 (9.547)
		0.9	72.9 (2.868)	202.6 (7.976)	241.4 (9.504)
3SP...36	+ 1SPA	9.8	69.9 (2.750)	213.9 (8.423)	270.1 (10.634)
		7.8	68.4 (2.691)	210.0 (8.268)	262.2 (10.323)
		6.3	69.9 (2.750)	207.2 (8.156)	256.5 (10.098)
		5	69.9 (2.750)	204.6 (8.055)	251.4 (9.898)
		4.2	69.9 (2.750)	203.1 (7.994)	248.3 (9.776)
		3.7	69.9 (2.750)	202.1 (7.957)	246.4 (9.701)
		3.2	69.9 (2.750)	201.1 (7.917)	244.4 (9.622)
		2.5	69.9 (2.750)	199.8 (7.864)	241.7 (9.516)
		2	69.9 (2.750)	198.8 (7.825)	239.7 (9.437)
		1.6	69.9 (2.750)	198.0 (7.795)	238.2 (9.378)
		1.2	69.9 (2.750)	197.2 (7.762)	236.5 (9.311)
		0.9	69.9 (2.750)	196.6 (7.740)	235.4 (9.268)
3SP...33	+ 1SPA	9.8	68.4 (2.691)	210.9 (8.305)	267.1 (10.516)
		7.8	68.4 (2.691)	207.0 (8.150)	259.2 (10.205)
		6.3	68.4 (2.691)	204.2 (8.037)	253.5 (9.980)
		5	68.4 (2.691)	201.6 (7.937)	248.4 (9.780)
		4.2	68.4 (2.691)	200.4 (7.876)	245.3 (9.657)
		3.7	68.4 (2.691)	199.1 (7.839)	243.4 (9.583)
		3.2	68.4 (2.691)	198.1 (7.799)	241.4 (9.504)
		2.5	68.4 (2.691)	196.8 (7.746)	238.7 (9.398)
		2	68.4 (2.691)	195.8 (7.707)	236.7 (9.319)
		1.6	68.4 (2.691)	195.0 (7.677)	235.2 (9.260)
		1.2	68.4 (2.691)	194.2 (7.644)	233.5 (9.193)
		0.9	68.4 (2.691)	193.6 (7.622)	232.4 (9.150)

		mm (inch)			
		A	B	C	
3SP...29	+ 1SPA	9.8	66.9 (2.632)	207.9 (8.187)	264.1 (10.398)
		7.8	66.9 (2.632)	204.0 (8.032)	256.2 (10.087)
		6.3	66.9 (2.632)	201.2 (7.919)	250.5 (9.862)
		5	66.9 (2.632)	198.6 (7.819)	245.4 (9.661)
		4.2	66.9 (2.632)	197.1 (7.758)	242.3 (9.539)
		3.7	66.9 (2.632)	196.1 (7.720)	240.4 (9.465)
		3.2	66.9 (2.632)	195.1 (7.681)	238.4 (9.386)
		2.5	66.9 (2.632)	193.8 (7.628)	235.7 (9.280)
		2	66.9 (2.632)	192.8 (7.589)	233.7 (9.201)
		1.6	66.9 (2.632)	192.0 (7.559)	232.2 (9.142)
		1.2	66.9 (2.632)	191.2 (7.526)	230.5 (9.075)
		0.9	66.9 (2.632)	190.6 (7.504)	229.4 (9.032)
3SP...22	+ 1SPA	9.8	63.9 (2.514)	201.9 (7.951)	258.1 (10.161)
		7.8	63.9 (2.514)	198.0 (7.795)	250.2 (9.850)
		6.3	63.9 (2.514)	195.2 (7.683)	244.5 (9.626)
		5	63.9 (2.514)	192.6 (7.583)	239.4 (9.425)
		4.2	63.9 (2.514)	191.1 (7.522)	236.3 (9.303)
		3.7	63.9 (2.514)	190.1 (7.484)	234.4 (9.228)
		3.2	63.9 (2.514)	189.1 (7.445)	232.4 (9.150)
		2.5	63.9 (2.514)	187.8 (7.392)	229.7 (9.043)
		2	63.9 (2.514)	186.8 (7.352)	227.7 (8.965)
		1.6	63.9 (2.514)	186.0 (7.323)	226.2 (8.906)
		1.2	63.9 (2.514)	185.2 (7.289)	224.5 (8.839)
		0.9	63.9 (2.514)	184.6 (7.268)	223.4 (8.795)
3SP...19	+ 1SPA	9.8	62.4 (2.455)	198.9 (7.833)	255.1 (10.043)
		7.8	62.4 (2.455)	195.0 (7.677)	247.2 (9.732)
		6.3	62.4 (2.455)	192.2 (7.565)	241.5 (9.508)
		5	62.4 (2.455)	189.6 (7.465)	236.4 (9.307)
		4.2	62.4 (2.455)	188.1 (7.404)	233.3 (9.185)
		3.7	62.4 (2.455)	187.1 (7.366)	231.4 (9.110)
		3.2	62.4 (2.455)	186.1 (7.327)	229.4 (9.032)
		2.5	62.4 (2.455)	184.8 (7.274)	226.7 (8.925)
		2	62.4 (2.455)	183.8 (7.234)	224.7 (8.846)
		1.6	62.4 (2.455)	183.0 (7.205)	223.2 (8.787)
		1.2	62.4 (2.455)	182.2 (7.171)	221.5 (8.720)
		0.9	62.4 (2.455)	181.6 (7.150)	220.4 (8.677)