

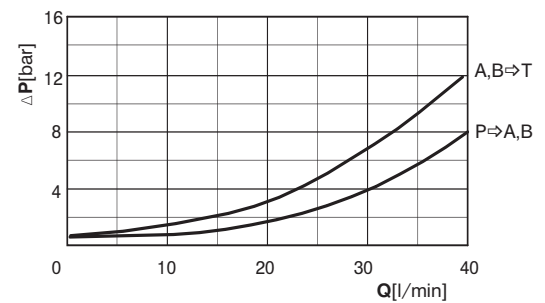
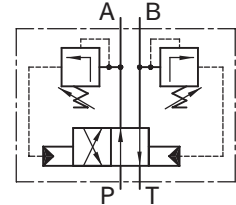
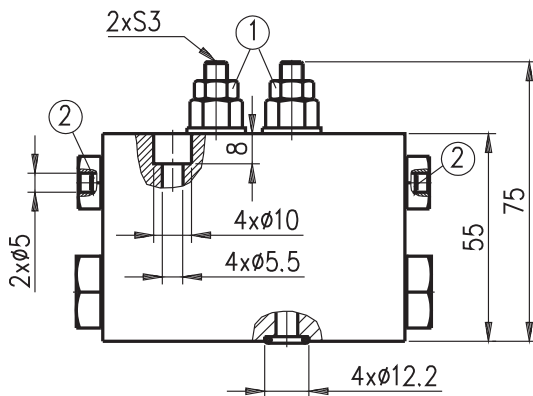
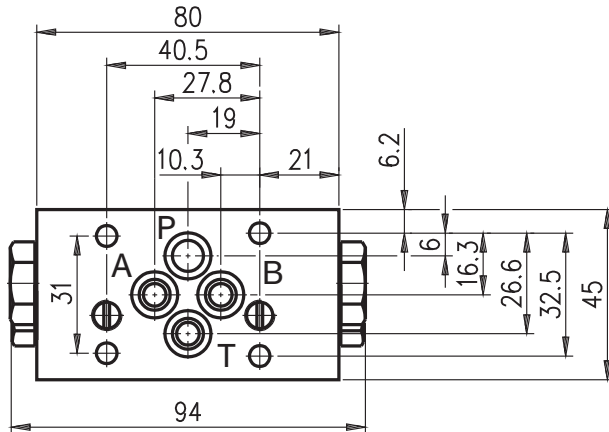
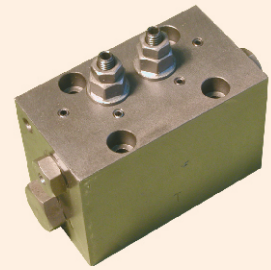


**Hidro
Pnevmo
Tehnika**

3, Vojeli St., Kazanlak, Bulgaria
Tel.: +359 431/ 62 228
Fax : +359 431/ 62 019
e-mail : info@hpt-bg.com
www.hpt-bg.com

HYDRAULIC DIRECTIONAL VALVE WITH AUTOMATIC SWITCHING

4/2 RHA 06/20



TECHNICAL DATA		
Working pressure P_w	bar	50...210
Flow rate	L/min	3...40
Pressure adjustment of relief valves position 1		$P_w + 10\%P_w$

Working fluid - mineral oil with viscosity from 10 to 400 cSt at 50 °C .

Temperature range: -20°C...+80°C.

Filtration absolute: 25µm .

Initial switching of directional control valve

- by push pins position 2 .

Mounting plate-

acc. To ISO 4401-AB-03-4A(CETOP3)

Tightening torque of connecting screws on the mounting plate - 8.5 N.m