

# HYVA CYLINDER

## FRONT-END CYLINDER WITH EYE

Hyva

page # 1 / 2

type:

FE 183 - 6 - 06800 - 072 \*K=1500

part number cylinder only:

015 02 215

tipping weight<sup>1)</sup>:

25 - 34 tons

mounting instructions on request

**HOLE PATTERN**  
 All mounting bolts and self-locking nuts, size M16 (DIN 931.Q8.8). Washers 17 x 30 mm (DIN 125B). Max. 2 mm clearance between brackets and cylinder. Locating plates to be welded after bolting the brackets.

B	:	386
B1	:	243
F	:	205
G*	:	1429
H*	:	1561
I	:	85
K*	:	1505
L	:	190
M*	:	164
db	:	207

\* incl. 20 mm pull out (p.o.); tolerances +20 -0

### specification

type number : FE 183 - 6 - 06800 - 072 \*K=1500  
 number of extensions : 6  
 total stroke : 6800 mm  
 weight incl. brackets : 320 kg  
 weight cylinder only : 290 kg  
 total volume : 107 L  
 working volume : 98 L  
 operating pressure : 190 bar (max.)  
 oil : see oil specification sheet

### brackets (not included)

chassis bracket : 015 06 043

<sup>1)</sup>tipping weight = net weight body + payload.

This Hyva cylinder is designed as a lifting device only. It must not be used as a structural member or be subject to side loads and/or abnormal conditions. Pump flow in consultation with Hyva engineering department

stage	1	2	3	4	5	6	total
effective diameter (mm)	183	162	141	120	99	78	
stroke (mm)	1145	1165	1224	1254	1254	760	6800

### calculation of the tipping weight

The calculation as shown is based on the following data:

working pressure : 190 bar (max.)

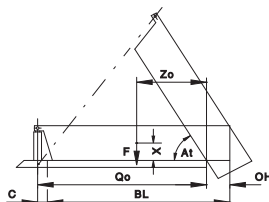
**body length (BL) : 8400 mm**

vertical distance between centre of gravity body and payload and rear hinge of body (X) : 850 mm

rear overhang (OH) : 750 mm

Zo = BL / 2 - OH  
 Qo = BL + C - OH (pivot)

$$At = \frac{\text{stroke} \times 60}{Qo}$$



This table shows the relationship between body length, rear overhang and tipping weight<sup>1)</sup> (tons) and also gives the final angle of tip. Calculation based on working pressure of 190 bar.

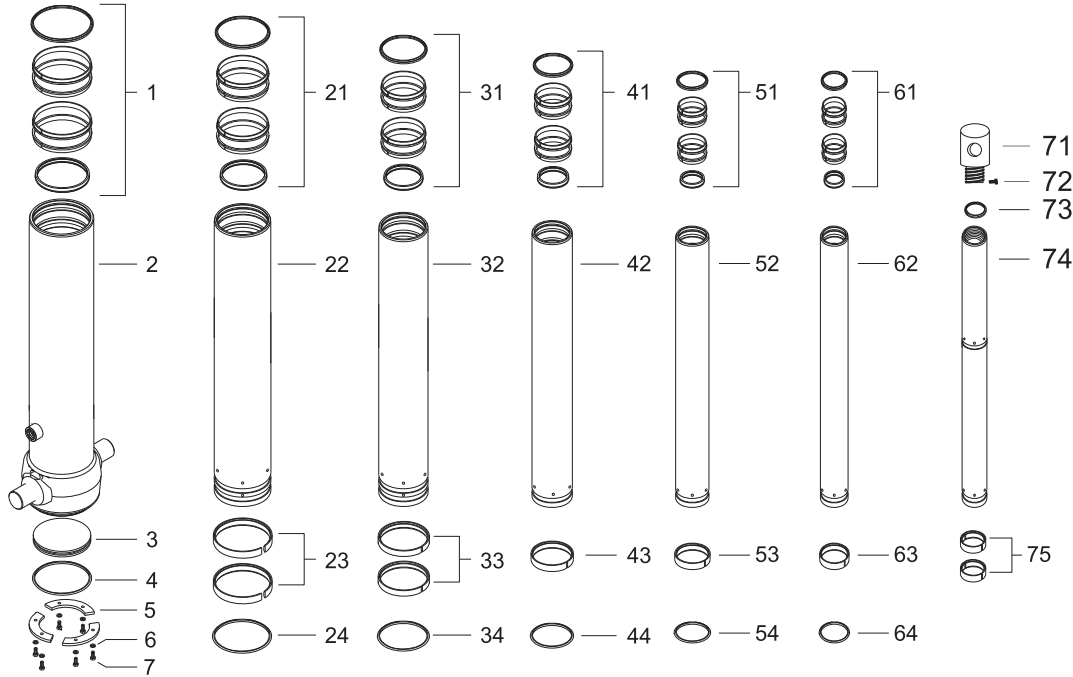
BL	8900			8400			7900		
OH	200	400	600	200	400	600	200	400	600
At	45	47	48	48	50	51	52	53	55
<b>Ycog</b>									
450	25	26	27	26	27	28	27	28	30
650	26	27	28	27	28	30	28	30	32
850	27	28	30	28	30	32	30	32	35

# HYVA CYLINDER

## FRONT-END CYLINDER WITH EYE

Hyva  
page # 2 / 2

type: FE 183 - 6 - 06800 - 072 \*K=1500  
part number cylinder only: 015 02 215  
tipping weight<sup>1)</sup>: 25 - 34 tons



### spare part list for cylinder 015 02 215

pos.	code no.	description	qty.
1	017 60 026 K	packset Ø207	1
2	025 19 899	B 207 - 1490 - 4/4 - 190 - 90 - HP	1
3	017 30 022	bottomplate Ø207	1
5	017 33 023 K	O-ring base Ø207	1
5	017 31 026	locking plate Ø207	3
6	017 32 547	washer for bolt	6
7	017 32 043	bolt	6
21	017 60 038 K	packset Ø187/183	1
22	026 16 270	S 183 - 1446 - SHP (-89)	1
23	017 50 045 K	slider Ø183	2
24	017 40 416 K	snap ring Ø183	1
31	017 60 040 K	packset Ø162	1
32	026 29 713	S 162 - 1446 - SHP (-89)	1
33	017 50 057 K	slider Ø162	2
34	017 40 428 K	snap ring Ø162	1

pos.	code no.	description	qty.
41	017 60 051 K	packset Ø141	1
42	026 52 258	S 141 - 1446 - SHP	1
43	017 50 069 K	slider Ø141	1
44	017 40 430 K	snap ring Ø141	1
51	017 60 063 K	packset Ø120	1
52	026 73 600	S 120 - 1446	1
53	017 50 070 K	slider Ø120	1
54	017 40 441 K	snap ring Ø120	1
61	017 60 075 K	packset Ø099	1
62	026 88 400	S 099 - 1446	1
63	017 50 082 K	slider Ø099	2
64	017 40 209 K	snap ring Ø099	1
71	017 96 756	Eye THR. Ø78 H50 L74 WD80	1
72	017 92 568	locking screw	1
73	017 33 096	O-ring Ø078	1
74	027 69 270	PS 078 - 1446 - HC (-455)	1
75	017 50 094 K	slider Ø078	2

### repair kit

code no.	description
017 62 114 K	complete cylinder packset consists of all packsets with packset grease and O-ring base

for specification see page # 1