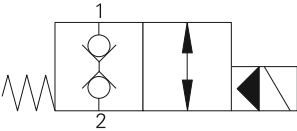


# SBV11-8-C / O - Solenoid Bi-directional valve

Poppet type,Bi-directional, normally closed & normally open  
60 L/min (15 USgpm) • 350 bar (5000 psi)

## SBV11-8-C Normally Closed

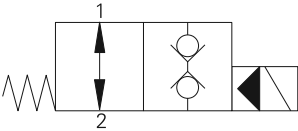


### Operation

In the de-energized position the valve is blocked in both directions. When the solenoid is energized the pilot poppet is released from the seat allowing the main poppet to open.

A series of internal check valves allows full flow in both directions.

## SBV11-8-O Normally Open



### Operation

In the de-energized position the valve is open in both directions. A series of internal check valves allows full flow in both directions.

When the solenoid is energized the pilot poppet closes the pilot orifice causing the main poppet to close.

## Performance data

### Ratings and specifications

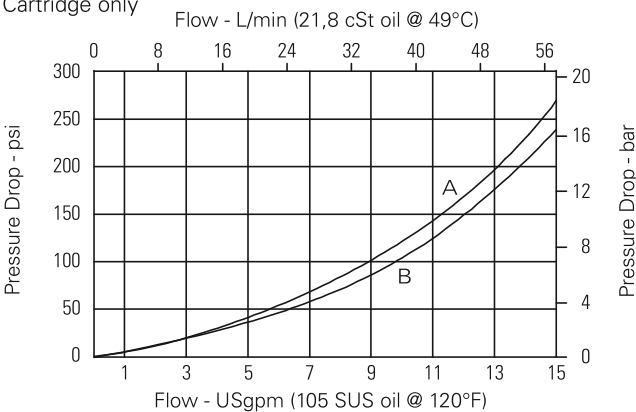
Performance data is typical with fluid at 21,8 cSt (105 SUS) and 49°C (120°F)

Typical application pressure (all ports)	350 bar (5000 psi)
Rated flow	60 L/min (15 USgpm)
Internal leakage, port 1 to port 2 & port 2 to port 1	5 drops/min, max @ 350 bar (5000 psi)
Temperature range	-40° to 100°C (-40° to 212°F)
Cavity	C-8-2
Weight cartridge only	0,12 kg (0.26 lbs)
Fluids	All general purpose hydraulic fluids such as: MIL-H-5606, SAE 10, SAE 20 etc.
Filtration	Cleanliness code 18/16/13
Seal kit	02-160777 (Buna-N), 02-160778 (Viton®)

Viton is a registered trademark of E.I. DuPont

## SBV11-8-C Pressure drop

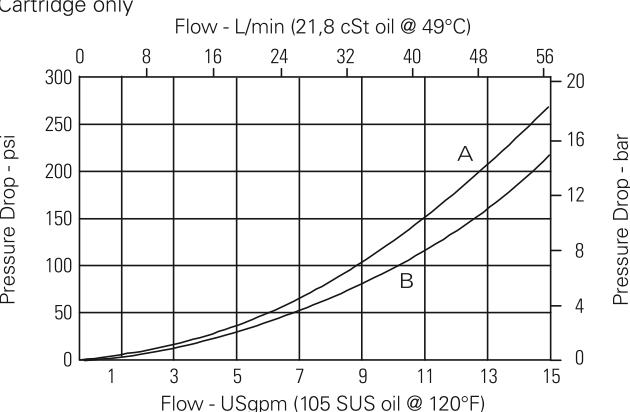
Cartridge only



**A** - Port 1 to port 2  
**B** - Port 2 to port 1

## SBV11-8-O Pressure drop

Cartridge only



**A** - Port 1 to port 2  
**B** - Port 2 to port 1

Where measurements are critical request certified drawings. We reserve the right to change specifications without notice.

# SBV11-8-C - Solenoid Bi-directional valve

Poppet type,Bi-directional, normally closed & normally open  
60 L/min (15 USgpm) • 350 bar (5000 psi)

## Model code

**SBV11 - 8 (V) - \* (\*) - (\*) \*\* - \*\*\*\* \* P - 00**

1 2 3 4 5 6 7 8 9 10 11

### 1 Function

**SBV11** - Solenoid valve

### 2 Size

**8** - 8 size

### 3 Seal material

**Blank** - Buna-N  
**V** - Viton®

### 4 Style

**C** - Normally closed  
**O** - Normally Open

### 5 Manual override option

**Blank** - No manual override  
**M** - Manual override  
For valve dimensions with manual override option installed see page A-980.

### 6 Valve housing material

**Blank** - Cartridge only  
**A** - Aluminum  
**S** - Steel

### 7 Port size

Code	Port size	Housing number	
		Aluminium	Steel
<b>0</b>	Cartridge only		
<b>2G</b>	1/4" BSPP	02-160727	02-160733
<b>3G</b>	3/8" BSPP	02-160728	02-160734
<b>4T</b>	SAE 4	02-160730	02-160736
<b>6T</b>	SAE 6	02-160731	02-160737
<b>8T</b>	SAE 8	02-160732	02-160738

See section J for housing details.

### 9 Connector types

**Blank** - No coil  
**G** - ISO 4400 DIN 43650  
**W** - Flying lead  
**N** - Deutsch (DC only)  
**Y** - Amp JR (DC only)  
**D** - Metripack 150 male (DC only)  
**J** - Metripack 280 male (DC only)  
**F** - Weather-Pack (Packard) male on wire leads

### 10 Coil series

**P** - 8 series, 23 W  
For coil part numbers and dimensions see section C.

### 11 Special features

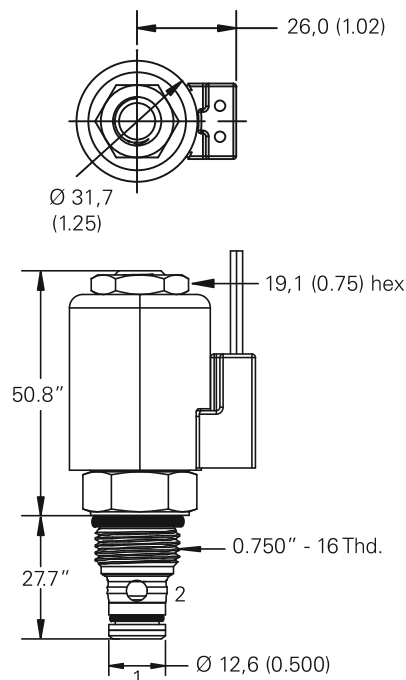
**00** - None  
(Only required if valve has special features omitted if "00.")

### 8 Voltage rating

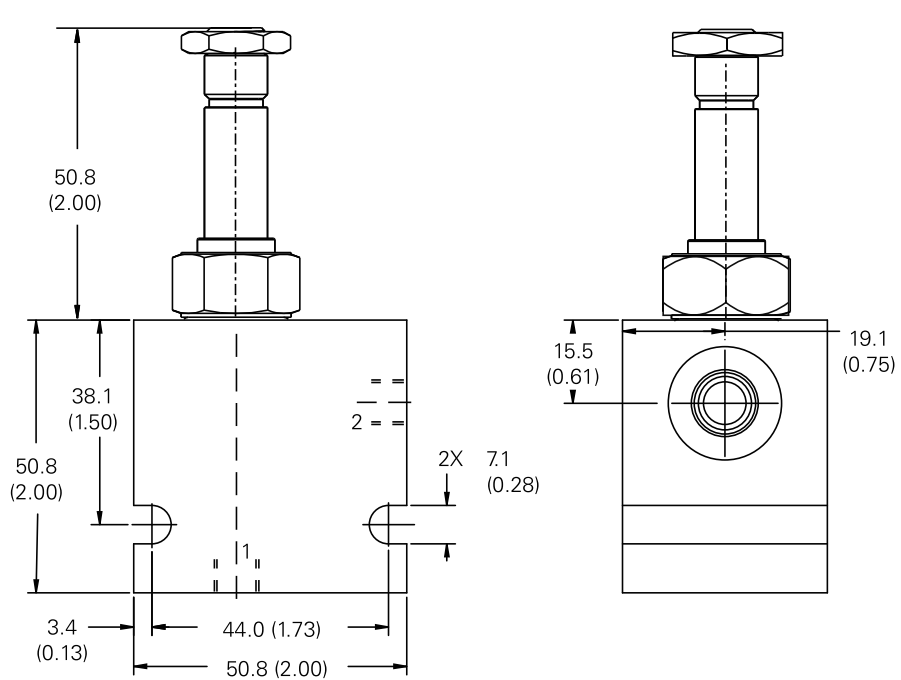
**00** - No coil  
**12D** - 12VDC  
**24D** - 24VDC  
**115A** - 115VAC  
**230A** - 230VAC  
**12B** - 12VDC/w diode\*  
**24B** - 24VDC/w diode\*  
\*Optional arc suppression diode.

## Dimensions - mm (inch)

### Cartridge only



### Installation drawing (Steel)



Where measurements are critical request certified drawings. We reserve the right to change specifications without notice.